

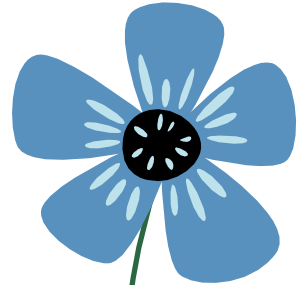
CSC

March '25 Updates



Agenda

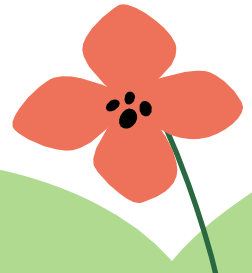
- MIS Updates
 - Attendance - Look at Trends*
 - Culture Data
 - Instructional Data
- Dress Code 25-26
- 8th Grade Continuation Contract - Feedback needed*
- Budget Updates



MIS 1 - Attendance

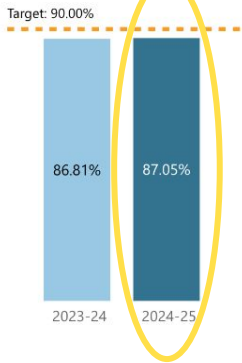
- Overall attendance: 87.05% (86.81% at this time)
 - Goal: 90% for BVIS (92% District)
- Chronic attendance: 53.16% (42.8% this time last year)
 - Goal: 43%
- Win: We're ahead of overall attendance from this time last year
- Concern: Chronic is high! Determining the root cause and working with families is key.

Let's look at the data and chat about trends and notable dips...

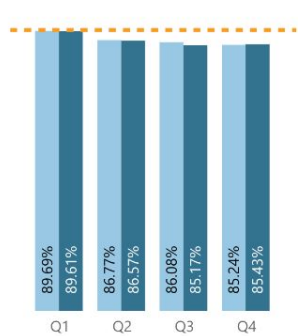


Overall Attendance Data

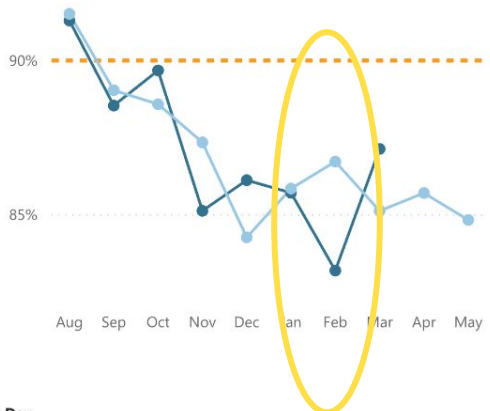
Attendance By Year



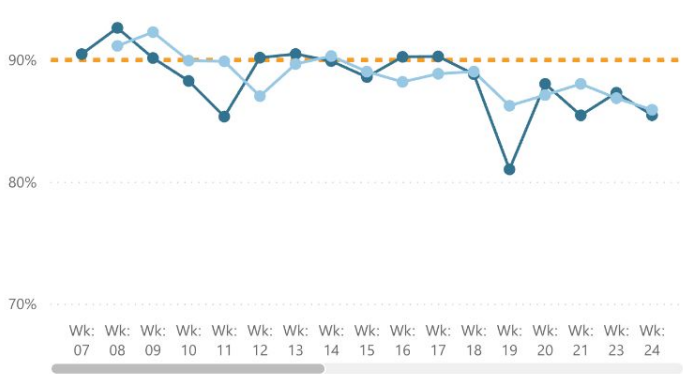
Attendance by Term



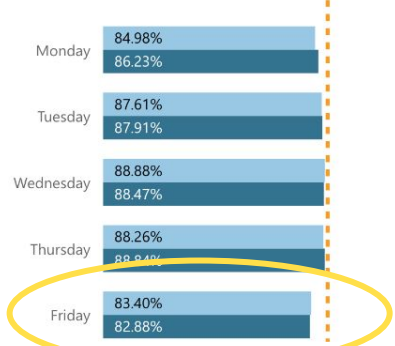
Attendance by Month



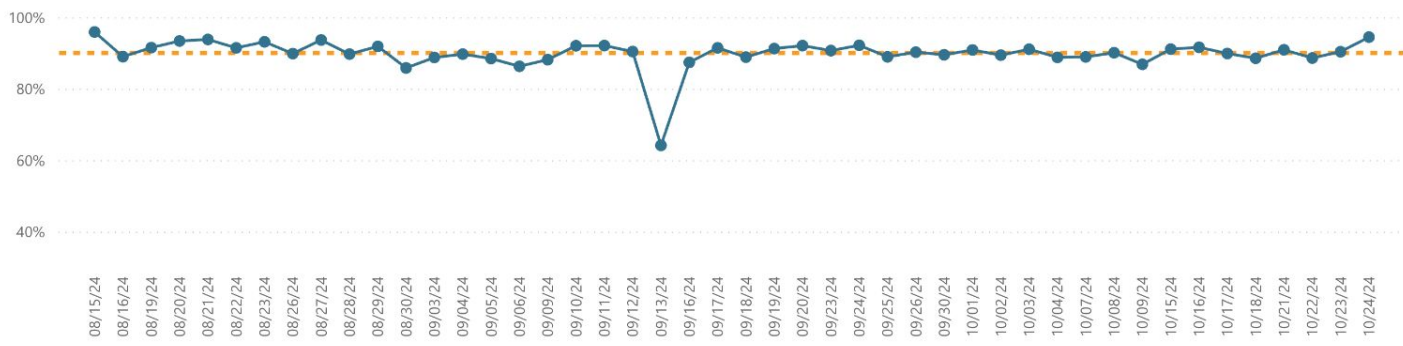
Attendance by Fiscal Week



Attendance by Day of Week



Current Year Attendance by Day



Chronic Data

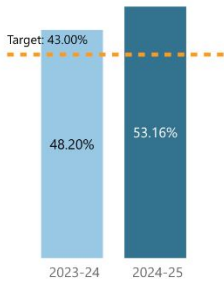
Day-level Data by Time (cannot be filtered by period, teacher, or course)

Data refresh date: 3/21/25 2:05 AM

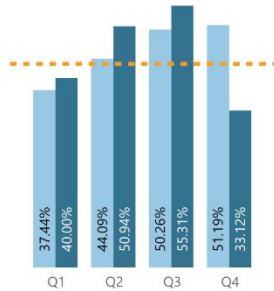
- Time Analysis
- Demographic Analysis
- Course / Teacher Analysis
- Comparison Tool
- Summary Metrics
- Attendance Not Taken
- Truancy
- Current Day Period-based Absences
- Filter Report

Filters Currently Applied: Measure: Chronic AbsenteeismSchool: Bear Valley International

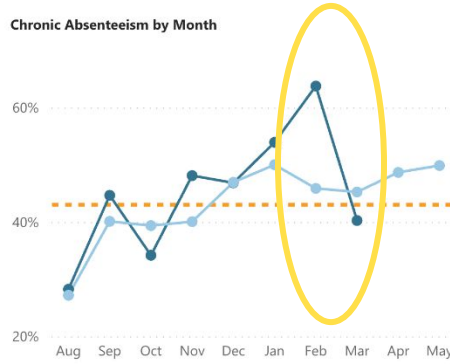
Chronic Absenteeism By Year



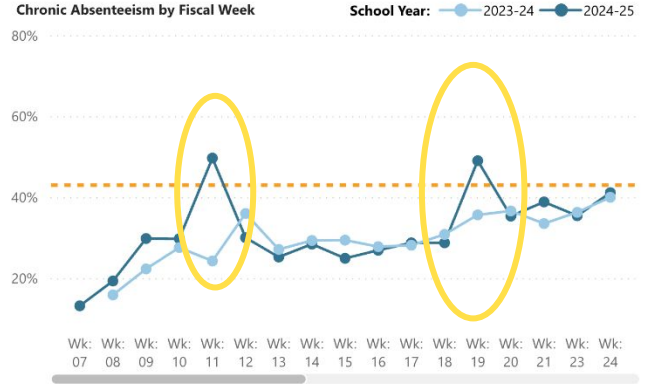
Chronic Absenteeism by Term



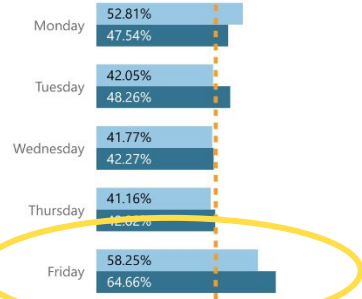
Chronic Absenteeism by Month



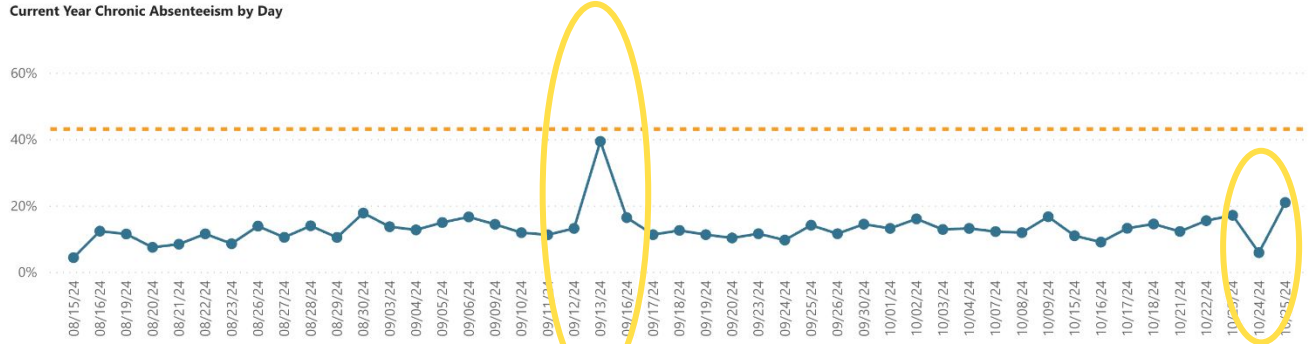
Chronic Absenteeism by Fiscal Week



Chronic Absenteeism by Day of Week

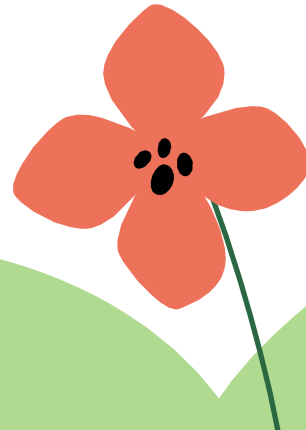
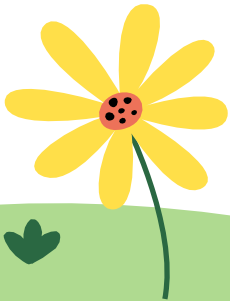


Current Year Chronic Absenteeism by Day



MIS 2 - Student Culture

- Overall ISS: 27
- Overall OSS: 24



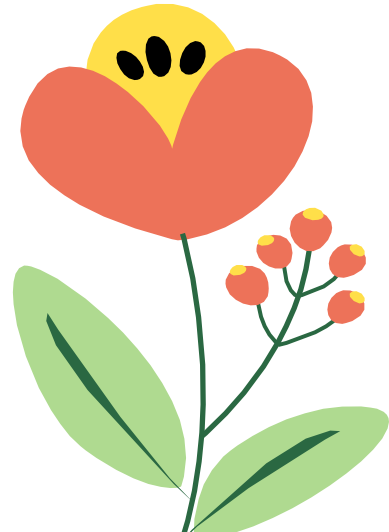
MIS 3 - Standards Based Instruction

School	6th - % correct	7th - % correct	8th- % correct
BVIS	38	47	33
Hamilton	33	30	32
Hill	46	49	44
Lake	30	29	26
Manual	37	26	37
Montbello	24	32	25
Morey	71	67	66
Skinner	48	56	55
West	27	27	31



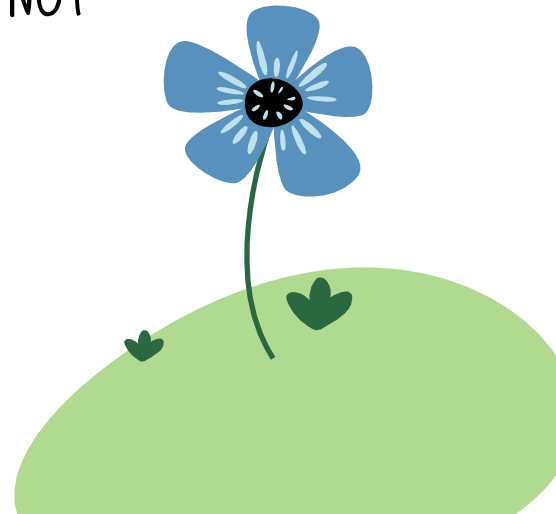
BVIS Dress Code 25-26 Decisions

- It was really helpful to hear your opinions on dress code at BVIS. Thank you, CSC!
- We will still have a dress code for next year; here's the plan:
 - Inch rule - 3 inches. Straps, singular logo size. (3 in size - length, width)
 - SOLID / Plain (no color blocking. No patterns)
 - No bellies, no butts, no bodysuits
 - Shorts, skirts - fingertip length (with straight arm)
 - No sleepwear - no pajama pants, no slippers, no blankets
 - Color wheel - Any shades green or blue, any shades of gray, white, black
 - No hoods on heads
 - No non-dress code colored shirt under zip-up hoodie (not allowed just to "zip it up" - we collect the non color shirt underneath).



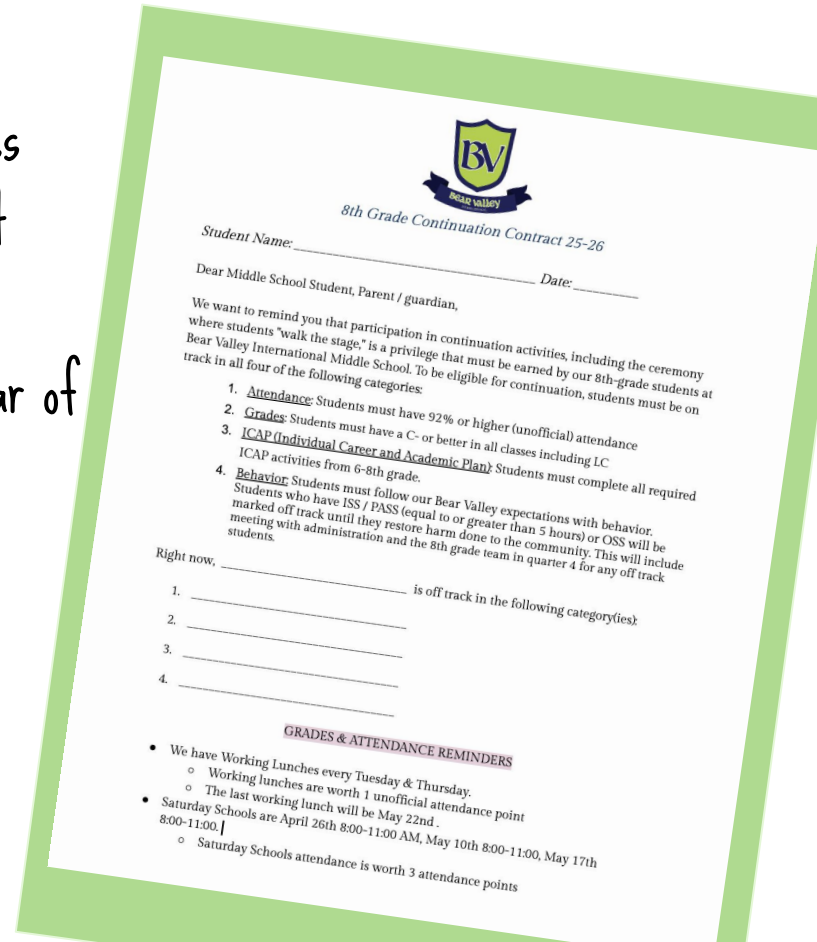
Better Communication in 2025-2026 on Dress Code

- All staff will know exact things to say when a student is out of dress code
 - scripts provided to ENSURE we're all on the same page
- Parent meetings - Parents will know exactly what the staff has been trained on so there are no surprises is a call home is made.
- Fashion shows at the beginning of the year for what IS and IS NOT allowed at BVIS
- Better messaging on WHY we have a dress code at BVIS
 - BV Unity!



8th Grade Continuation Contracts

- Students who are severely off track in 3+ categories will have parent meeting with Mrs. Sutherland about danger of not continuing.
- Contracts signed in the meeting to make it very clear of expectations before continuation and the week of Continuation
- Review the contract as a CSC ----->
 - Is it clear for parents?



The image shows a document titled "8th Grade Continuation Contract 25-26" with the Bear Valley logo at the top. The form includes fields for "Student Name:" and "Date:". Below these is a salutation "Dear Middle School Student, Parent / guardian," followed by a paragraph explaining that participation in continuation activities is a privilege earned by 8th-grade students at Bear Valley International Middle School. A list of four categories follows: 1. Attendance (92% or higher), 2. Grades (C- or better), 3. ICAP (Individual Career and Academic Plan) activities, and 4. Behavior (ISS/PASS or OSS). A section for "Right now," asks for off-track categories. At the bottom, "GRADES & ATTENDANCE REMINDERS" lists working lunches and Saturday Schools.

Bear Valley
8th Grade Continuation Contract 25-26

Student Name: _____ Date: _____

Dear Middle School Student, Parent / guardian,

We want to remind you that participation in continuation activities, including the ceremony where students "walk the stage," is a privilege that must be earned by our 8th-grade students at Bear Valley International Middle School. To be eligible for continuation, students must be on track in all four of the following categories:

1. **Attendance:** Students must have 92% or higher (unofficial) attendance
2. **Grades:** Students must have a C- or better in all classes including LC
3. **ICAP (Individual Career and Academic Plan):** Students must complete all required ICAP activities from 6-8th grade.
4. **Behavior:** Students must follow our Bear Valley expectations with behavior. Students who have ISS / PASS (equal to or greater than 5 hours) or OSS will be marked off track until they restore harm done to the community. This will include meeting with administration and the 8th grade team in quarter 4 for any off track students.

Right now, _____ is off track in the following category(ies):

1. _____
2. _____
3. _____
4. _____

GRADES & ATTENDANCE REMINDERS

- We have Working Lunches every Tuesday & Thursday.
 - Working lunches are worth 1 unofficial attendance point
 - The last working lunch will be May 22nd.
- Saturday Schools are April 26th 8:00-11:00 AM, May 10th 8:00-11:00, May 17th 8:00-11:00.
 - Saturday Schools attendance is worth 3 attendance points

Budget / Staffing Updates

- Will be hiring a long term sub for ELD from April 1 to end of year
- New ELD posted for next year - Interviews happening now
- New Band posted for next year - Interviews happening now
- Ways we are compensating teachers next year at BVIS for their additional duties:
 - SEL Specialist - 2 teachers create all SEL turn-key lessons for all Learning Community Teachers
 - Lead Student Support Liaison
 - Office Support III will be taking on SAL duties. SAL Stipend given
 - Read Plan Teachers